

DIP forming products

Features of standard caps

Caps for multi purpose use.

It has the flexibility by soft vinyl chloride, large tolerance of dimension and easy to use.

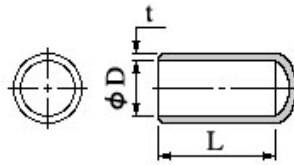
Another feature is its abundant size. Inner diameter and length can be prepared other than the listed items.

Use: Masking for painting, dust cover cap and terminal protection cap.

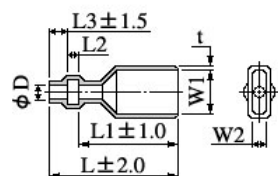
Terminal cap

Size

Item	ϕD	L	t
CS-2	2	15	0.8
CS-2.5	2.5	15	0.8
CS-3	3	15	0.8
CS-3.5	3.5	15	0.8
CS-4	4	15	0.8
CS4.5	4.5	15	0.8
CS5	5	15	0.8
CS-5.5	5.5	15	0.8
CS-6	6	15	0.8
CS-6.35	6.35	15	0.8
CS-6.5	6.5	15	0.8
CS-7	7	15	0.8
CS-7.5	7.5	15	0.8
CS-8	8	15	1
CS-8.5	8.5	15	1
CS-9	9	15	1
CS-9.5	9.5	15	1
CS-10	10	20	1
CS-10.5	10.5	20	1
CS-11	11	20	1
CS-11.5	11.5	20	1
CS-12	12	20	1.2
CS-12.5	12.5	20	1.2
CS-13	13	20	1.2
CS-13.5	13.5	20	1.2
CS-14	14	20	1.2
CS-14.5	14.5	20	1.2
CS-15	15	20	1.2
CS-15.5	15.5	20	1.2
CS-16	16	20	1.2
CS-17	17	25	1.5
CS-18	18	25	1.5
CS-19	19	25	1.5
CS-20	20	25	1.5
CS-21	21	25	1.5
CS-22	22	25	1.5
CS-23	23	25	1.5
CS-24	24	25	1.5
CS-25	25	25	1.5
CS-26	26	30	1.5
CS-27	27	30	1.5
CS-28	28	30	1.5
CS-30	30	30	1.5
CS-32	32	30	1.5
CS-34	34	40	1.5
CS-36	36	40	1.5
CS-38	38	40	2
CS-40	40	40	2
CS-42	42	40	2
CS-44	44	40	2
CS-46	46	40	2
CS-48	48	40	2
CS-50	50	40	2



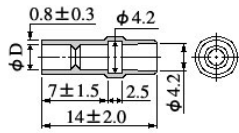
Pressure bonding terminal insulation sleeve



ST

Size list

Item	W1	W2	D	L	L1	L2	L3	t (STD)	t (UL)
ST110-20-23-15.5	4	1.8	2	23	15.5	2.5	5	0.8	1
ST110-25-23-15.5	4	1.8	2.5	23	15.5	2.5	5	0.8	1
ST110-30-23-15.5	4	1.8	3	23	15.5	2.5	5	0.8	1
ST187-20-23-15.5	6	2.3	2	23	15.5	2.5	5	0.8	1
ST187-25-23-15.5	6	2.3	2.5	23	15.5	2.5	5	0.8	1
ST187-30-23-15.5	6	2.3	3	23	15.5	2.5	5	0.8	1
ST187-32-23-15.5	6	2.3	3.2	23	15.5	2.5	5	0.8	1
ST187-35-23-15.5	6	2.3	3.5	23	15.5	2.5	5	0.8	1
ST187-40-23-15.5	6	2.3	4	23	15.5	2.5	5	0.8	1
ST187-45-23-15.5	6	2.3	4.5	23	15.5	2.5	5	0.8	1
ST205-25-23-15.5	6.5	3.2	2.5	23	15.5	2.5	5	0.8	1
ST205-30-23-15.5	6.5	3.2	3	23	15.5	2.5	5	0.8	1
ST205-35-23-15.5	6.5	3.2	2.5	23	15.5	2.5	5	0.8	1
ST205-40-23-15.5	6.5	3.2	4	23	15.5	2.5	5	0.8	1
ST205-45-23-15.5	6.5	3.2	4.5	23	15.5	2.5	5	0.8	1
ST250-20-26-18	8	3.5	2	26	18	3	5	0.8	1
ST250-25-26-18	8	3.5	2.5	26	18	3	5	0.8	1
ST250-28-26-18	8	3.5	2.8	26	18	3	5	0.8	1
ST250-30-26-18	8	3.5	3	26	18	3	5	0.8	1
ST250-32-26-18	8	3.5	3.2	26	18	3	5	0.8	1
ST250-35-26-18	8	3.5	3.5	26	18	3	5	0.8	1
ST250-40-26-18	8	3.5	4	26	18	3	5	0.8	1
ST250-45-26-18	8	3.5	4.5	26	18	3	5	0.8	1
ST250-50-26-18	8	3.5	5	28	18	3	5	0.8	1
ST10-25-34-26	11.5	5.5	2.5	34	26	3	5	1	1.2
ST10-32-34-26	11.5	5.5	3.2	34	26	3	5	1	1.2



SA

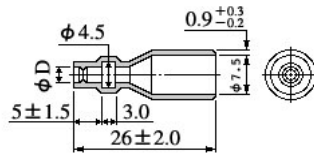
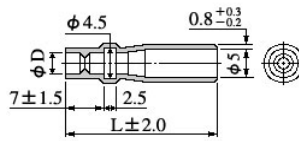
Size list

Item	SA-25	SA-28	SA-30	SA-35	SA-40
Dφ	2.5	2.8	3	3.5	4

SB

Size list

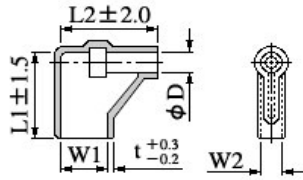
Item	Dφ	L
SB25-27	2.5	27
SB28-27	2.8	27
SB30-27	3	27
SB32-27	3.2	27
SB35-27	3.5	27
SB25-34	2.5	34
SB28-34	2.8	34
SB30-34	3	34
SB32-34	3.2	34
SB35-34	3.5	34
SB40-34	4	34



DA

Size list

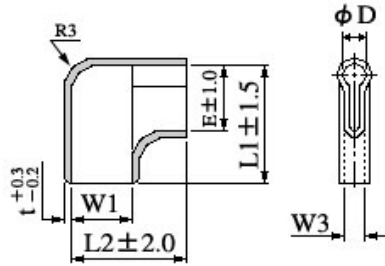
Item	DA2-25	DA2-28	DA2-30
Dφ	2.5	2.8	3



Flag type

Size list

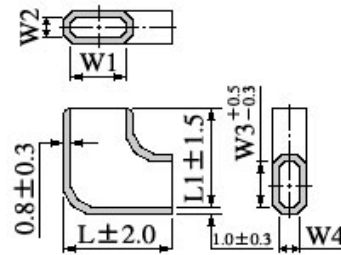
Item	W1	W2	D	L1	L2	t
SH110-35	4.5	2.5	3.5	12	15	0.8
SH187-30-12	6	2.5	3	12.5	13	0.8
SH187-30-14	6	2.5	3	14	13	0.8
SH187-35-14	6	2.5	3.5	14	13	0.8
SH187-40-14	6	2.5	4	14	13	0.8
SH250-25-17	8	3.5	2.5	17	16	1
SH250-30-17	8	3.5	3	17	16	1
SH250-40-17	8	3.5	4	17	16	1
SH250-50-17	8	3.5	5	17	16	1
SH250-60-17	8	3.5	6	17	16	1



Flag post-assembly type

Size list

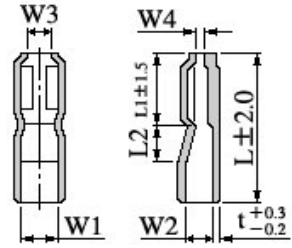
Item	W1	W2	D	E	L1	L2	t
SH187-KM2-14	6	2.5	3	8	14	13	0.8
SH250-KM2-17	8	3.5	4	10	17	16	1



Flag type (silicon)

Size list

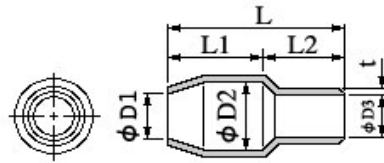
Item	W1	W2	W3	W4	L1	L2
SH187KMR TV-B	5.6	3	5	3	13	11
SH250KMR TV-B	8	3.5	7.3	3.5	15	15



Flat post-assembly

Size list

Item	L	L1	L2	W1	W2	W3	W4	t
ST110F	23	9.5	4	4	2.3	3.3	1	0.8
ST110ES	21	9.5	4	4	2.3	3.3	1	0.8
ST187F	23	9	5	6	2.75	5	1.1	1
ST187ES	21	9	5	6	2.75	5	1.1	1
ST250F	26	10.5	5.5	8	3.55	7	1.25	1
ST250ES	24.5	10.5	5.5	8	3.55	7	1.25	1



V cap

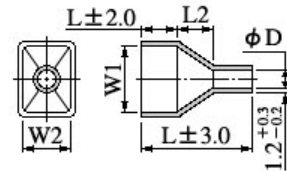
Size list

Item	D1	D2	D3	L	L1	L2	t
V-1.25	2.8	3.3	3.1	13	6	7	0.6
V-2	3.3	4.5	3.7	14	7	7	0.7
V-3.5	4.2	5.7	4.1	17	9	8	0.8
V-5.5	4.2	5.7	5.2	17	9	8	0.8
V-8	6.2	7.2	6.2	19	10	9	1
V-14	7.5	10	8	25	14	11	1.1
V-22	10.5	12	9.5	30	15	15	1.2
V-38	12.5	14	11.8	34	17.5	16.5	1.5
V-60	15	16.8	13.5	39	20	19	1.5
V-80	17	19	16	47	25	22	1.6
V-100	19	22	18	54	30	24	1.7
V-125	21	24	20	57	32	25	1.8
V-150	23	24.5	22	65	35	30	2
V-200	27	32	24	65	35	30	2
V-250	29	38	26.5	77	35	42	2.5
V-325	29	38	29	77	37	40	2.5

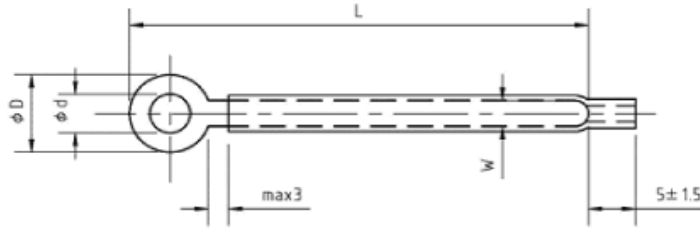
Coupler cover

Size list

Item	W1	W2	D	L	L1	L2
A100604	10	6.5	4	60	26	10
A110505	11.5	5.4	5	40	8	12
A110906	11.5	9.6	6	40	8	12
A120504	12	5	4	30	10	5
A120507-1	12	5	7	30	10	5
A120507-2	12	5.5	7	39	12	9
A121210	12	12	10	62	15	27
A121007	12.5	10	7.7	43	14	12
A130606	13.5	6	6	46	15	6
A131108	13.8	11.5	8	40	8	12
A141306	14	13	6	50	12	15
A140707	14.5	7	7.5	40	13	6
A150704	15	7.4	3.8	27	14	8
A151004	15	10	4	50	25	5
A151308	15	13	8	60	26	8
A161005	16	10	5	30	14	9
A161315	16	13	15	45	17	3
A160505	16.5	5.5	5	45	18	12
A160606	16.5	6	6	45	18	12
A170607	17	6	7	47	16	11
A170610	17	6	10	45	15	10
A170606	17	6.1	6.7	40	15	5
A170608	17	6	8	45	18	12
A171309	17.5	13.5	9	44	10	19
A171408	17.5	14.5	8	56	26	10
A181108	18	11.5	8	50	8	17
A181604	18	16	4	50	15	20
A191906	19	19	6	53	41	3
A190609	19.5	6.6	9.6	45	18	10
A191306	19	13	6	63	16	30
A201106	20	11	6	50	5	25
A201612	20	16	6	50	15	20
A210606	21.5	6	6	51	22	8
A211520	12	15.5	20	58	20	10
A220610	22	6	10	50	19	11
A221206	22	12	6.5	81	21	40
A221506	22	15	6	65	28	22
A221509	22	15	9	60	26	10
A221608	22	16	8.5	32	17	5
A220708	22.5	7	8	45	15	12
A221110	22.5	11.5	10	50	8	17
A231620	23	16	20	58	20	10
A231705	23	17	5	57	26	12
A232108-1	23	21	8	84	51	11
A232108-2	23	21	8	56	24	12
A251105	24	11	5	40	20	10
A251904	25	19.5	4	63	33	10
A252010	25	20	10	50	5	25
A261110	26.4	11.5	10.5	50	8	17
A261906	26.5	19	6	55	21	24
A271513	27.5	15.5	13	48	18	17
A281522	28	15	22	55	20	10
A301511	30	15	11	63	34	9
A302013	30	20	13	72	45	9
A302508	30	25	8	75	50	10
A310806	31	8	6	45	19	15
A301111	30.6	11.5	11	50	8	17
A311507	31	15	7.8	68	28	22
A311506	31	15.5	6	62	32	15
A311613	31	16	13	51	13	23
A312109	31	21	9	70	35	20
A311505	31	15	5	50	24	15
A321808	32	18	8	48	26	8
A322108	32	21	8.8	65	30	20
A331908	33.5	19	8	56	26	10
A341111	34.8	11.5	11.5	50	8	17
A372308	37.5	23	8	63	33	10
A421909	42.5	19	9	56	26	10



Wiring clip

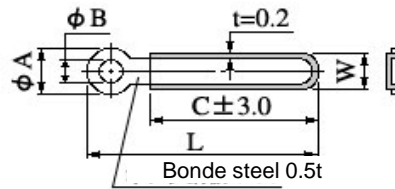


SCL type Size list

Item	ΦD	Φd	W	L
SCL-63034	6	3	2	34
SCL-63048	6	3	2	48
SCL-63254	6	3.2	3.6	54
SCL-60054	6	w/o hole	3.6	54
SCL-63339	6	3.3	3	39
SCL-83028	8	3	3	28
SCL-83366	8	3.3	4.6	66
SCL-83535	8	3.5	5	35
SCL-83540	8	3.5	3	40
SCL-84164	8	4.1	5	64
SCL-80064	8	w/o hole	5	64
SCL-84522	8	4.5	3	22
SCL-84554	8	4.5	4.8	54
SCL-84576	8	4.5	4.5	76
SCL-80076	8	w/o hole	4.5	76
SCL-84584	8	4.5	4.6	84
SCL-80084	8	w/o hole	4.6	84
SCL-845126	8	4.5	6	126
SCL-800126	8	w/o hole	6	126
SCL-94345	9	4.3	4	45
SCL-100050	10	w/o hole	4.6	50
SCL-110065	11	w/o hole	5	65
SCL-1100126	11	w/o hole	6	126
SCL-117076	11	7	5	76

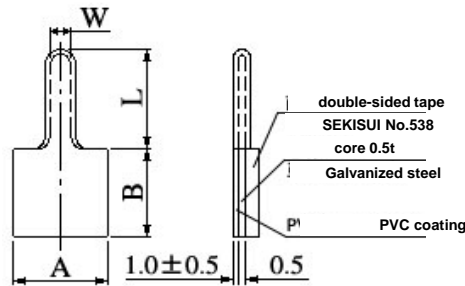
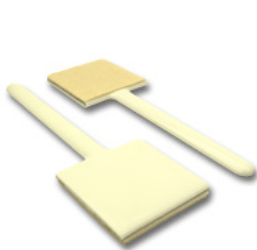
Shrinking tube material properties list

Item	Standard value	Unit
Tensile strength	Strength	more than 10.4 MPa
	Elongation	more than 200 %
After over heating	Strength	more than 7.3 MPa
	Elongation	more than 100 %
Voltage resistance	1014	Ω·cm



CL type
Size list

Item	A	B	C	W	L
CL63034	6	3	24	2	34
CL63048	6	3	40	2	48
CL63254	6	3.2	46	3.6	54
CL83028	8	3	18	3	28
CL83366	8	3.3	55	4.6	66
CL83535	8	3.5	25	5	35
CL83540	8	3.5	30	3	40
CL84164	8	4.1	53	5	64
CL80064	8	w/o hole	53	5	64
CL84522	8	4.5	12	3	22
CL84554	8	4.5	42	4.8	54
CL84576	8	4.5	65	4.5	76
CL80076	8	w/o hole	65	4.5	76
CL84584	8	4.5	72	4.6	84
CL80084	8	w/o hole	72	4.6	84
CL845126	8	4.5	112	6	126
CL800126	8	w/o hole	112	6	126
CL94345	9	4.3	35	4	45
CL100050	10	w/o hole	38	4.6	50
CL110065	11	w/o hole	52	5	65
CL1100126	11	w/o hole	112	6	126
CL117076	11	7	62	5	76



TA type
Size list

Item	A	B	W	L
TA-8	8	9	2.1	18
TA-14	14	14	3.5	25
TA-19L	19	20	4	40

Material propertie

Item	Unit	Test result		Test method	
		PVC ID-108	PVC IM-104	Standard	Condition
Specific gravity	(g/cm ³)	1.2±0.1	1.3±0.1	-	Specific gravity cup method
Hardness	Degree	60±5	70±5	JIS K6301	Shoer A
Tensile strength	kg/cm ³	140±10	160±10	JIS K6723	Shopper tester Tensile speed 200mm/min
Expansion rate	%	360±25	320±25		
100% modulus	kg/cm ³	360±25	320±25		
Tear strength	kg/cm	35±5	35±5		
Thermal stability	Discoloration	x	△	200°C×10min	Gear oven
Softening temperature	°C	-40±5	-40±5	JIS K6723	Crashberg flexible temperature tester
Brittle temperature	°C	-40±5	-40±5	JIS K6723	Brittle temperature tester
Breakdown voltage	kV/mm	10~15	10~15	JIS K6911	Sample thickness 1mm
Volume resistivity	Ω·cm	1.0×10 ⁹	1.0×10 ⁹	JIS K6723	Set temperature 25°C
Volatile loss	%	less than 1.0	less than 1.0	-	-
Self-extinguishing properties	-	-	UL94V-0	UL94	-
Organic solvent resistivity	Swelling aromatic, hydrocarbons and ester-based solvents, and dissolved in ket-base solvents.				

Sample preparation conditions

Gelation conditions

180°C×15 minutes (on a 1.8mm glass plate)

Sample thickness

1.5mm(1.0mm conversion)

This table was prepared just for reference based on our test data.

Please take note these values may vary based on the molding conditions.